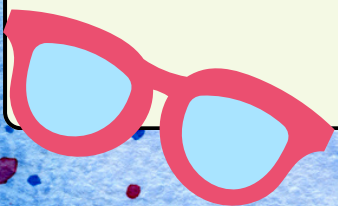


**Together we pave a path for our future generations.**

**August 2025**





# Floater

**Connie Belair**



Hello everyone,

My name is Connie Belair, I have been working with YFN for many years, in different departments such as Qualark, and the Fishery department as lead monitor and alternate delegate. I've lived in Hope for 44 years and absolutely love this place.

I recently started working in the floater position which is a variety of things such as:

- driving members to doctor appointments
- taking members shopping
- driving members to workshops or meetings
- helping out wherever I can
- taking the bus on day trips

I really enjoy working with the members and I've met so many nice people that I enjoy being around. If anybody needs a ride for doctor or dentist appointments or even if you have shopping to do give me a call. I can be reached on 604-206-7165. I look forward to hearing from you. 😊





# Food Sovereignty Department

Sarah Bélair-Bergman

We are pleased to share an exciting development in our food sovereignty program with the recent installation of a new kitchen building beside our greenhouse. This dedicated space will be used to preserve and process the food we grow in the greenhouse. The kitchen will support a wide range of activities, including pickling, canning, freezing, refrigerating and dehydrating. This marks a significant step forward in building long-term food security and creating hands-on opportunities for community connectedness.



In addition to this new development, we want to recognize the ongoing efforts of Cathy and Margaret, who have been leading preservation work at our community centers. Cathy has been busy crafting delicious bread & butter, dill, and mustard pickles from our cucumber harvests, while Margaret has been freezing and dehydrating vegetables to ensure nothing goes to waste. Their dedication and knowledge are a vital part of our department.



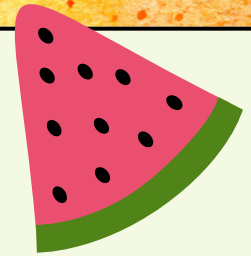
We would also like to welcome Charmaine Anderson to the team in the newly established role of Greenhouse Coordinator. Charmaine brings her positive energy, care, and enthusiasm to this position, and will be leading day-to-day operations in the greenhouse. Her roles are primarily focused on ensuring our plants thrive and our growing practices remain sustainable and community centered. Her presence marks a meaningful investment in the long-term success of our project, and we're thrilled to have her on board. In the fall, we will be bringing back our workshops so keep an eye out for those!



From the Food Sovereignty Department Team  
Sarah Bélair-Bergman, Janice Hope & Charmaine Anderson



# Councillor & Acting Band Administrator



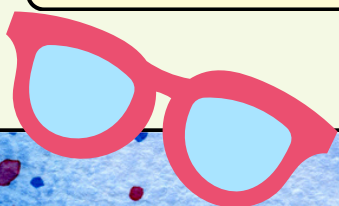
**Janita Peters**

## Council Update – From My Seat as Councillor

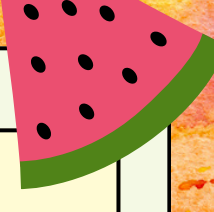
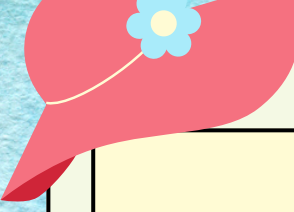
This summer has been an active and meaningful time for Yale First Nation, with important steps forward in areas that matter to our members.

- New Parks for Our Communities – I'm excited to share that work is underway to create a new community park in Lukseetsissum and another in Stullawheets. These parks will be designed with input from Elders, families, and youth to ensure they reflect our culture and provide safe, accessible spaces for gathering, recreation, and community events.
- Highway 1 – Stullawheets Negotiations – Council continues to work on the Highway 1 Stullawheets claim, documenting impacts, gathering historical evidence, and engaging with members to ensure the Nation's voice is strong in negotiations with the government.
- Seabird CPR Claim – We are also supporting ongoing work on the CPR land claim in Seabird, collaborating to ensure our shared concerns and rights are represented and respected in this important process.
- Housing Projects – We have been actively moving forward with plans for Elders' housing, ensuring designs are accessible, energy-efficient, and culturally safe.
- Cultural & Language Revitalization – I continue to support the integration of Halq'eméylem into community programming, seeking funding for workshops and fluent speakers to share their knowledge.

Council's work this summer has been driven by the voices of our members, and we will continue to keep you informed as projects develop and negotiations progress.







Since stepping into the Acting Band Administrator role, I have been focused on ensuring our day-to-day operations are running smoothly while also advancing key initiatives with the Nation.

- Staff Support & Coordination – I've been working closely with all departments to improve communication, task follow-through, and accountability to our membership. This includes ensuring departments meet reporting requirements, and work together on community priorities
- Community Comprehensive Planning (CCP) – We held our first CCP meet-and-greet this summer with our Elders' groups, joined by CCP mentor Shirley-Patt. With summer activities slowing down as we move into fall, we hope to bring together a small group of dedicated "fire holders" to help guide this important project.
- Emergency Preparedness – We have continued to secure funding for an Emergency Response Coordinator position to continue the on-going work with fire mitigation.
- Funding Successes – We continue to pursue opportunities to stack funding from multiple sources, including ISC, CDWAI, and external partners, to stretch every dollar further for our members.


As Acting Band Administrator, my goal is to keep Yale First Nation moving forward with transparency, efficiency, and heart, ensuring every decision serves our people now and for the generations to come.

### **On a Personal Note:**

Over the summer, I've been embracing creativity and learning new skills. I've been creating beautiful, self-taught beaded headdresses (I'm excited to bring workshops into the communities soon!) and have started sewing dresses and creating more ribbon skirts. I also continue to enjoy my scrapbooking, which brings me so much joy.

My family is healthy and well, and I'm grateful for that every day. This journey with you all has been such a beautiful experience, and I feel deeply honoured to witness the incredible growth we are achieving together.





# Lukseetsissum Elder in Residence

**Peg Peters**



Hi everyone.

My name is peg and I'm the elder in Residence for Lukseetissum building. Just to update you, there is an unformal sharing circle on August 21st from 1 to 4 and every second Thursday after.

In addition, we have a women's Social once a month, the next is August 29th from 1 to 4. This month there will be a massage therapist on site. The one last month was great! Please message me if you would like to have a great massage and your name on the list.

Other programs are the craft circle every Thursday from 6 to 8. And TV night on Monday from 5 to 8.

In closing, I have been busy preserving our veggies ....ty Janice and Sarah. Also had a good day canning blueberries with the ladies. At this time I would like to thank Gord for volunteering his time and helping us Matriarchs/elders with the heavy lifting. I will keep you updated for other canning opportunities to join us. Have a great day, week and months.





# Community Social Work Department

Paul Keller



## Roles and Responsibilities

### **Child Protection and Prevention**

- Child Protection: Working with family to ensure the safety of child(ren)
- Prevention Services: Supporting families in areas of respite, counselling, child/youth/daycare, and special needs

At any time while involved with Children and Family Services, you can reach out to the Community Social Work Department for support, guidance, and/or advocacy.

### **Income Assistance**

- Monthly financial and employment support (on-reserve 19 +)

### **Community Social Development Funding Initiatives**

- Annual funding initiatives addressing individual and community needs (on-off reserve)

### **Past Community Events**

Funded through the Community Social Work Department ...

- Castle Fun Park - Children & Families
- PNE - Children & Families
- Blueberry Canning
- Community Garden (Stullawheets and Lukseetsissum)



Graveyard Cleanup (Lukseetsissum)





## ***Ongoing Community Social Work Activities...***

### ·Matriarch/Elder Meetings

(A place where your voice is heard, and your guidance is needed Monthly)

‡ 19 regular member participants

‡ Ages 55+

‡ Online video options are available for those unable to attend in person

### ·Fraser Valley Regional Library Tutoring – with Janeen Parent

‡ On site monthly

‡ Connects members to library services

‡ Helps with your computer, tablet, and/or Cellular phone literacy

### ·Community Garden/Orchard Initiative

‡ Community Garden is open to all community members

If you are living on-off site and in need of support or would like to be a part of a particular group or activity noted above, please get in touch with Community Social Worker, Paul Keller at [pkeller@yalefirstnation.ca](mailto:pkeller@yalefirstnation.ca)

## **New Social Worker Assistant Hire**

### **Welcome Vanessa Jones to YFN Social Work Department!**

Vanessa recently completed her Social Work practicum with YFN, and many of you had the opportunity to get to know her during that time. She will now be joining us part-time while completing her 4th year in the Social Work Degree program at UFV.

"Ey swayel mekw'wat. Kíckama tel skwix. Te litsel kwa Lil'wat qas te Sts'ailes. Hello everyone! My traditional name is Kíckama, I am from Lil'wat Nation (Mt. Currie) and married into Sts'ailes. Thank you for welcoming me into your communities, I'm honoured to be here at Yale First Nation and grateful for the opportunity to connect with your Elders, leaders, and members."

Vanessa Jones





### Sharing Yale First Nation Stories...

Meet Yale First Nation Elder, Patricia (Trish) Moreno – a familiar and cherished face in our community. Though she lives in Cheam, Trish finds time to bring her grandchildren, Raven and Starling, to enjoy the beauty and connection of Lukseetsissum's Community Garden.



Trish 19 yr. Graduation

Whether it's participating at community events or sharing her thoughts at monthly Elders meetings, Trish's presence reflects her deep commitment to nurturing both the land and the people around her.

*If you have a story and photo you'd like to share with your Nation, please connect [Pkeller@yalefirstnation.ca](mailto:Pkeller@yalefirstnation.ca)*

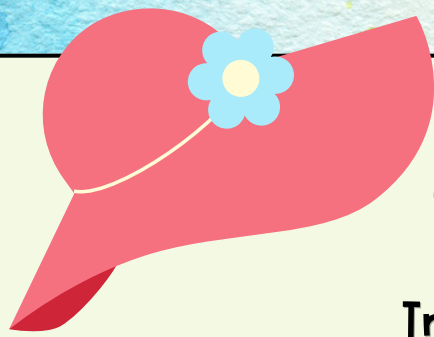
*The YFN community is served by two Community Centers...  
Lukseetsissum on Hwy #7 and Stullawheets on Hwy #1 – as well as the Band Office  
in Hope, BC.*

Paul J. Keller, BSW  
Yale First Nation  
Community Social Worker  
314 Hudson Bay St.  
Hope, BC V0X – 1L0  
Off. (604) 869 – 0013 Cel. (604) 206 – 8246 Fax. (604) 869 – 0053  
[Pkeller@yalefirstnation.ca](mailto:Pkeller@yalefirstnation.ca)



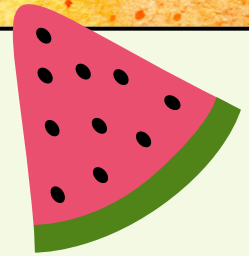
***Purposely Living, Loving, Laughing and Learning***

It is a privilege to serve the YFN Nation, focusing on various aspects of community-led supports, activities, and services. Thank you to everyone for your continued involvement and support!



# Chief

**Troy Peters**



Hello YFN Members,

I hope everyone is doing well and enjoying the summer, and that the kids are getting ready for the upcoming school year.

Over the past several months, YFN Council has been in ongoing discussions with Enbridge regarding the Sunrise Expansion. We have met with the Canada Energy Regulator (CER) and shared our concerns about the project.

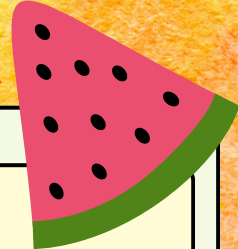
Council has clearly stated to the CER that, in over 60 years of Enbridge operations transporting natural gas, the Yale First Nation community has lost significant portions of our Traditional Land Use (TLU) directly because of the Enbridge pipeline. Reclaiming our TLU is not about applying a temporary fix—it's about ensuring Enbridge recognizes the depth of YFN's losses to the rich lands our people accessed freely for hundreds of years.

Council has urged the CER to consider the full impacts on YFN and will be providing recommendations for Enbridge's future actions regarding the Sunrise Expansion. With the CER process deadline set for February 2026, this is the ideal time for Enbridge to work towards a signed agreement with YFN—on our timeline, not theirs. Enbridge's deadlines will not pressure YFN into signing prematurely.

We will provide further updates on the Sunrise Expansion in September.







YFN is also pursuing forestry opportunities. We have submitted a request to the Ministry of Forests to expand our forestry tenure license into an area with more valuable timber along Highway 5. In addition, we are developing a long-term sustainable forestry management plan and have applied to manage four watersheds under a woodlot license.

If approved, this will position YFN at the forefront of timber harvesting, ensuring that environmental assessments address Cultural Value Impacts. Managing these watersheds would secure long-term forestry economic opportunities for both current and future generations.

On housing, YFN is working on a long-term housing plan to meet the needs of our members. Council has heard from many members who want to return home and have family housing available. Our goal is to create a strong, accessible housing plan that will serve our Nation for years to come. The future of YFN is looking bright, and I look forward to sharing more exciting news in the months ahead.

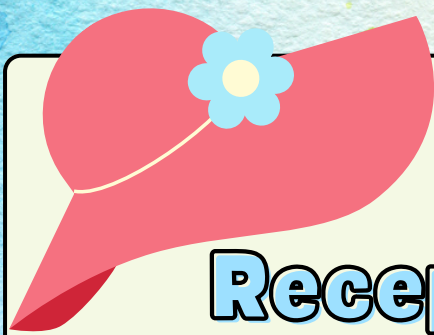
I want to close with this: we are the original people of this land. Since first contact, YFN has lost much of what defines us as First Peoples—our land, our culture, and our way of life. But over time, we are reclaiming both.

It is our responsibility to focus on strengthening the future for the next generations. Our Elders remind us of the sacrifices our ancestors made so that we can stand here today, and it is our duty to preserve these lands and our culture for those who come after us—just as they did for us.

I am honored to serve our Nation, and I will never forget that the people I serve come first.

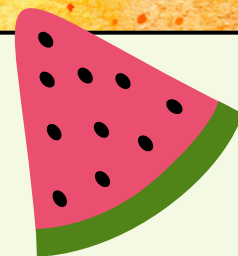
Sincerely,  
Yale First Nation  
Chief Troy Peters





# Reception

**Tisheena Greene**



Good day,

My name is Tisheena Greene; I have been working with Yale for 2 years now.

I am your first point of contact when you come into the office, I am also your first point of contact when you call the office. I will help direct your call to the right person or department.

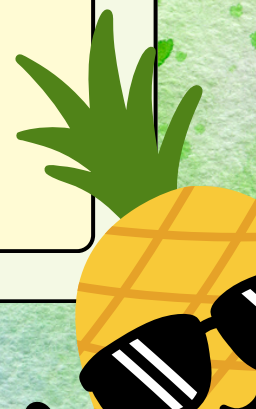
I am the Receptionist; I direct your call to the right person or department. I am also the Indian Register Administrator that handles the status cards, I am the one you come to see if you need a new status card, or a replacement.

Bear with me, I am still learning as I go with this role.

As of February of 2025, I have become an education assistant. I have been doing the youth workshops that have been held with FNHA. We talked about healthy eating and other topics. We do like a monthly workshop, please reach out to me if you child-teen want to attend these.

You need help with status cards,

Please phone the office 604-869-0013 or send me an email [tgreene@yalefirstnation.ca](mailto:tgreene@yalefirstnation.ca) to make an appointment with me.







# Housing

**Katherine Giroux**



We're excited to congratulate our new young family—Patrick, Teagan, and their two beautiful daughters—on moving into their new home at the Sixplex in Lukseetsissum. It's wonderful to see them finally settled in. Congratulations to this lovely family!

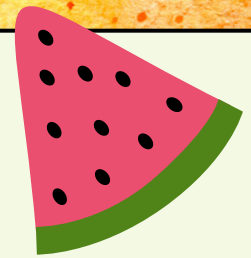
A quick note: renovations have been slightly delayed so we could focus on completing the cleanup in Lukseetsissum and it's truly starting to shine. A heartfelt thank-you to our amazing maintenance team for their hard work and dedication, and to our members for your patience and understanding. We're almost at the finish line, and the results are absolutely worth the wait.





# Water Maintenance

**Talon Coghill**



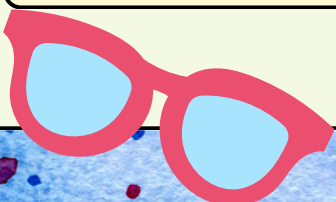
Hello newsletter readers,

It's Talon again for a personal and work update. The summer has been great so far and hope you all feel the same. To get right to it, all three of our communities I take samples from have all been testing at '<1 MPN/100mL' for both E-Coli and total coliform.

These are what I send of weekly samples for. E-Coli is the main bacteria we target to kill with chlorine. Total coliform is a similar bacterium, generally not harmful to humans, present in similar conditions water, soil and even in warm blooded animals. Total coliform is mainly used as an indicator bacterium. If I get a sample with more than 1 MPN/100mL I know that the chlorine isn't doing its job and put out a boil water advisory.

On the topic of Chlorine, I hope all residents are pleased with the quality of water (Palatability). I test and adjust chlorine every working day, my plan to use a dilution has helped me have more control, if the levels are low, I can slowly bring them up. If levels start to rise, it happens slowly, and I can adjust it by the next working day.

If you believe you are chlorine sensitive please let me know and I can assist finding alternatives and funding for sink filters, shower filters, etc.





I recently got accepted to the 'Associate Certificate in Fundamentals of Water and Wastewater Operations program'. This is a 5-module online course starting in September and running until next September 2026. I will be moving to a 4 day work week when the course is running as one of my work days will now become school day. I would also like to thank the Dennis and Phyllis Washington Foundation as they have funded this opportunity for a community and indigenous water operator.

On my last personal note, I went on a trip to Spain in June with my childhood friend Johnny. I hope to enjoy the photos.

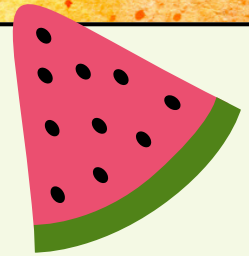






# Emergency Coordinator

Daryl Hansen



Hello everyone,

I hope you're enjoying your summer.

We have been working on a few revisions of the emergency and hazard assessment plans after they were presented to Chief and Council, before we get some hard copies for review. We are currently waiting on our second round of funding to begin FireSmarting where we left off and to do some yearly maintenance on the houses that were completed last year.

Will and I have been keeping a close watch on fires near our communities. We have been very fortunate this fire season but will continue to monitor surrounding areas. We appreciate that people have been following the guidelines for fire bans.

Aside from emergency work, I have been using the band's new skid steer with the mower attachment, keeping things cut low, which also helps with fire prevention and fixing roads as we go.

It's an honor to be working in my community as a member, and I appreciate all the kind words about the work we have been doing. Thank you all, and I look forward to being back out there more!

Best regards,  
Daryl





# Youth

## ☀️ Youth Appreciation Post – Yale First Nation ☀️

As summer winds down, we want to take a moment to raise our hands and say thank you to the incredible Yale First Nation Youth who worked with us over the past few months!

Your dedication, energy, and commitment made a big impact on our communities. Whether it was:

🌱 Helping out in the greenhouse & Community garden

🔧 Working alongside our maintenance team

🚒 Assisting our emergency department

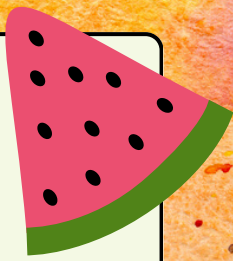
📋 Or sitting in on office meetings

You stepped up in meaningful ways and made us proud every step of the way.



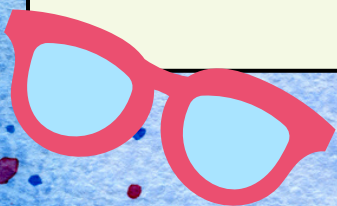


**Mateo Marino**  
**Joshua Natrall**  
**Peter Noster**  
**Richard Malloway**  
**Noah Natrall**



Some of you are heading back to school this fall, and we wish you nothing but success in your studies! 📖✨ We also hope to continue working with some of our youth throughout the school year, and look forward to seeing familiar faces return next summer—along with some new ones, too! This summer was a great one for all of us, and it's thanks in large part to your hard work and presence. We can't wait for next year and the opportunities it will bring!

Thank you, Youth of YFN—you truly are the future of our Nation.





# Acknowledging All Our Team Members



**Rachelle Provencher**  
**Executive Assistant**



**Cathy Hope**  
**Stullawheets Elder In Residence**



**Judith Moreno**  
**Council**



**Brandon Kriegl**  
**Maintenance**



**Cathy Speth**  
**Finance**

